

FOX IV⁸¹⁰ DIODE LASER

**A.R.C.
LASER**
MADE IN GERMANY

**Tradition and Cutting-Edge
Laser Technology United**



since 2006

→ today

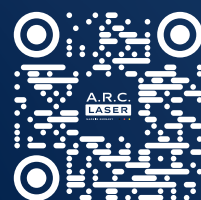
CE 0123 A.R.C. Laser ist zertifiziert nach EN ISO 13485:2012 + AC:2012 93/42 EWG

**SMART
MODERN
PORTABLE**

**GLAUCOMA
SPECIALIST**



**A.R.C.
LASER**
MADE IN GERMANY



Publisher and Copyright

A.R.C. Laser GmbH
Bessemersstr. 14
90411 Nürnberg

Telefon: +49 (0) 911-21779-0
Telefax: +49 (0) 911-21779-99
E-Mail: info@arclaser.de

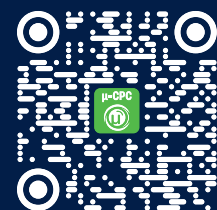
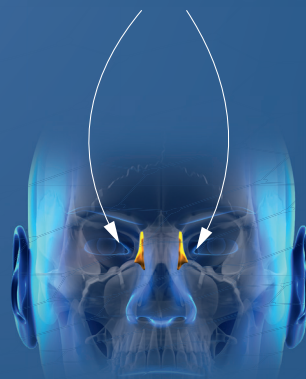
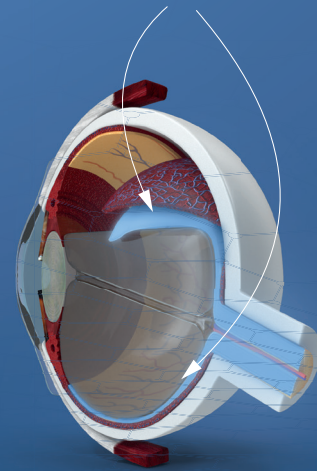
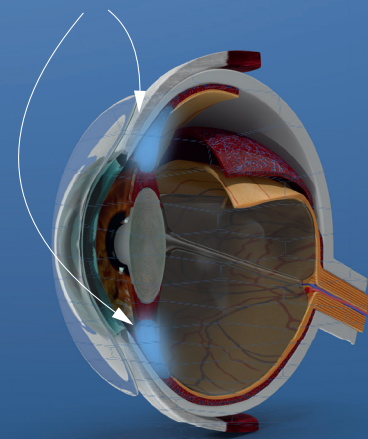
FOX IV 810

YOUR BEST OPTION FOR

Glaucoma IOP Reduction

Retinal Photocoagulation

Lacrimal Surgery



ENERGY & TIME
DISPLAY MODE

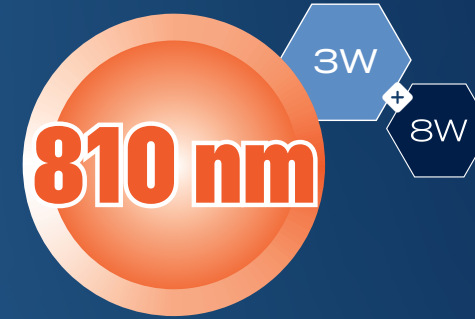


AUDIO IN
5 LANGUAGES



METRONOME
FUNCTION

The ultimate
solution for
CPC & μCPC



The ultimate diode laser for open-angle glaucoma



Time or energy counter?
FOX IV 810 offers both options.



Speaking companion
FOX IV 810 provides a 5 language voice output
and counts applied energy or time in steps of 10.



Always the right speed!
FOX IV 810 improves μCPC use with its
metronome function offering an audio signal
in 1 s or 1 J intervals.

ENERGY

120J
120J

TIME

80s
80s

Next generation portable diode Laser



Durable metal housing
(17.4 x 14.2 x 16.3 cm)



Large user-friendly
colour touch display



Highly portable,
battery powered FOX IV 810 with
all accessories in a compact
carrying case



Lightweight
only 1.53 kg

Powerful and reliable



810 nm diode laser with
power output up to 8 Watts



Safety-feature: power limitation of
3 W for anterior and posterior treatments



Color coded application user interface



Important treatment parameters
prominently displayed

Reputation you can trust



Maintenance-free technology



Based on smart features of the FOX 810

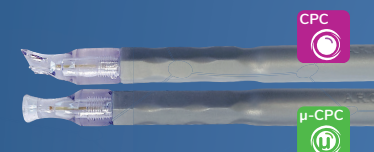


More than 15 years of diode laser expertise
and thousands of units sold worldwide

COMPLETE RANGE OF ACCESSORIES

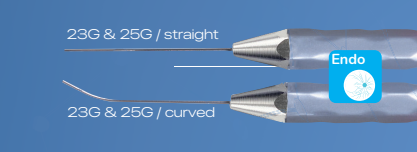
Glaucoma

Glaucoma Probes



Retinal Coagulation

LIO
Endo Probes



Lacrimal Surgery

DCR Probes

